

MOST POPULAR ROUTES

TRAVEL PEAK TIMES

REVENUE

ON TIME PERFORMANCE

←  
navigation

# RAILWAY DASHBOARD

National railway company | 2024

Power BI report design by studiodejager.nl | picture & data by Maven Analytics

*About the dashboard*  
Insight in the most popular routes, showing the travel peak times by hour.

Full analysis of the revenue and the on time performance of the trains.

# MOST POPULAIR ROUTES

NATIONAL RAIL COMPANY | tickets in # and in % of total, trains in #, price in pounds

MOST POPULAIR ROUTES

TRAVEL PEAK TIMES

REVENUE

ON TIME PERFORMANCE

Most populair train route (sorting by total tickets)

by departure station

	Departure Station	Total Tickets ↓	% Total	Total Trains	Total Price
Manchester Piccadilly - Liverpool Lime Street	Manchester Piccadilly	4,628	13.5%	2,675	17,310
London Euston - Birmingham New Street	London Euston	4,209	12.7%	2,515	50,349
London Kings Cross - York	London Kings Cross	3,922	12.1%	2,400	183,193
London Paddington - Reading	London Paddington	3,873	12.1%	2,412	65,368
London St Pancras - Birmingham New Street	London St Pancras	3,471	10.6%	2,106	52,869
Liverpool Lime Street - Manchester Piccadilly	Liverpool Lime Street	3,002	11.4%	2,267	11,950
Liverpool Lime Street - London Euston	Liverpool Lime Street	1,097	1.8%	363	113,299
London Euston - Manchester Piccadilly	London Euston	712	2.6%	512	61,004
Birmingham New Street - London St Pancras	Birmingham New Street	702	1.8%	361	19,011
London Paddington - Oxford	London Paddington	485	0.6%	118	12,859
Manchester Piccadilly - London Euston	Manchester Piccadilly	345	1.5%	289	33,860
London St Pancras - Leicester	London St Pancras	337	0.8%	159	7,354
York - Durham	York	258	0.9%	171	1,983
York - Peterborough	York	242	0.8%	157	10,764
Reading - Swindon	Reading	228	0.7%	140	3,548
Birmingham New Street - Tamworth	Birmingham New Street	227	0.6%	121	1,726
Birmingham New Street - Manchester Piccadilly	Birmingham New Street	224	0.7%	142	2,507
Birmingham New Street - Nuneaton	Birmingham New Street	219	0.6%	125	2,184
York - Doncaster	York	211	0.7%	134	1,311
Liverpool Lime Street - Crewe	Liverpool Lime Street	193	0.6%	126	1,563
Birmingham New Street - Stafford	Birmingham New Street	190	0.6%	128	1,365
Birmingham New Street - Liverpool Lime Street	Birmingham New Street	175	0.8%	161	1,790
<b>Total</b>		<b>31,653</b>	<b>100.0%</b>	<b>19,871</b>	<b>741,921</b>

# PEAK TRAVEL TIMES

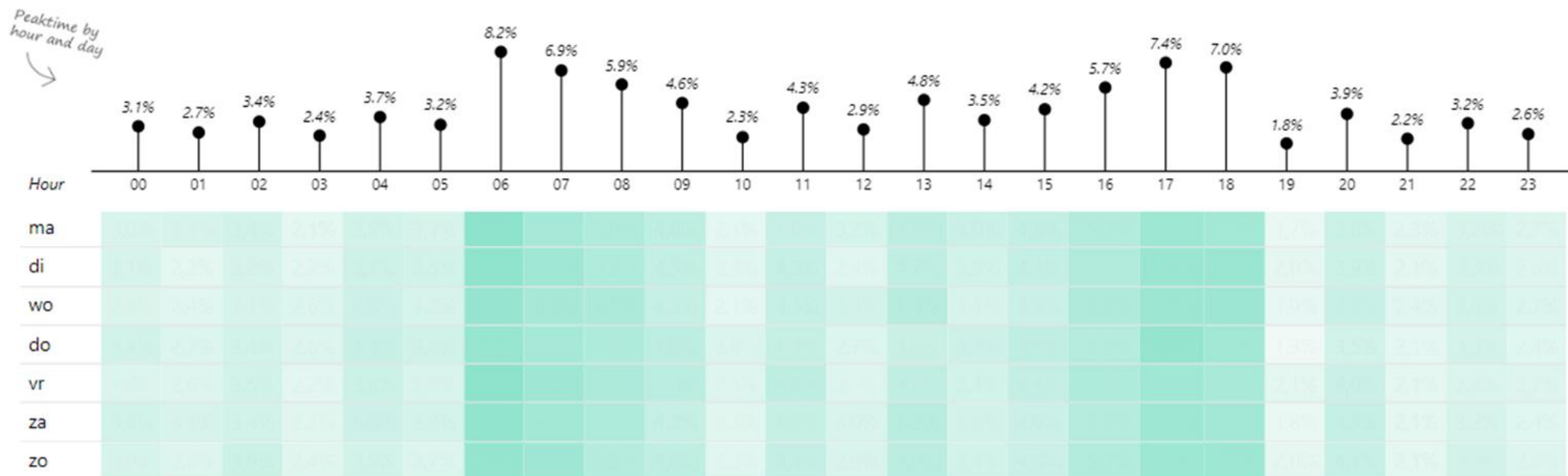
NATIONAL RAIL COMPANY | Trains in # and in % of total, tickets in #

MOST POPULAR ROUTES

TRAVEL PEAK TIMES

REVENUE

ON TIME PERFORMANCE



## Travel peak times

The visual shows the travel peak times during the week days and daytime. It shows the share of the total tickets by day time and hour.

The more tickets during a time slot, the higher the percentages.

The higher the percentages, the colors will become darker.

## by departure station

	Total Trains	% Total	Total Tickets
Manchester Piccadilly	3,394	17.8%	5,335
London Euston	2,936	15.4%	4,698
Liverpool Lime Street	2,893	15.2%	4,327
London Kings Cross	2,531	13.3%	4,021
London Paddington	2,506	13.1%	4,143
London St Pancras	2,235	11.7%	3,601
Birmingham New Street	1,335	7.0%	2,008
York	630	3.3%	870
<b>Total</b>	<b>19,081</b>	<b>100.0%</b>	<b>29,773</b>

## by train route

	Total Trains	% Total	Total Tickets
Manchester Piccadilly - Liverpool Lime Street	2,565	13.4%	4,338
London Euston - Birmingham New Street	2,418	12.7%	3,998
London Kings Cross - York	2,312	12.1%	3,724
London Paddington - Reading	2,291	12.0%	3,587
Liverpool Lime Street - Manchester Piccadilly	2,190	11.5%	2,878
London St Pancras - Birmingham New Street	2,017	10.6%	3,198
London Euston - Manchester Piccadilly	486	2.5%	667
Birmingham New Street - London St Pancras	345	1.8%	651
<b>Total</b>	<b>19,081</b>	<b>100.0%</b>	<b>29,773</b>

# REVENUE FROM TICKETS

NATIONAL RAIL COMPANY | Total price and avg price in pounds, total price in % of total

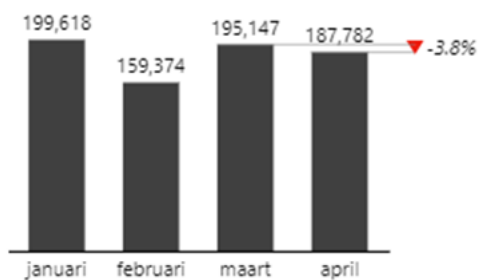
MOST POPULAR ROUTES

TRAVEL PEAK TIMES

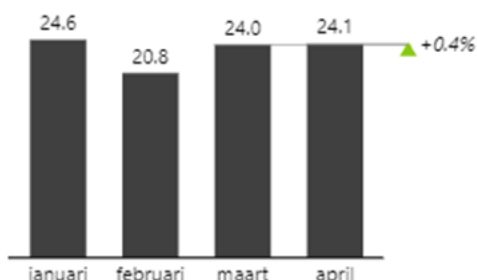
REVENUE

ON TIME PERFORMANCE

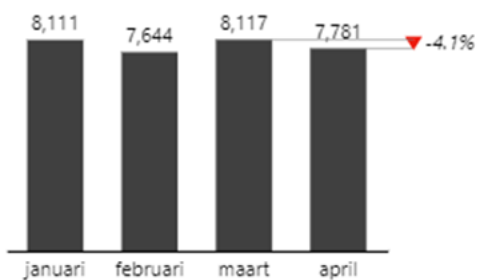
Total price by month



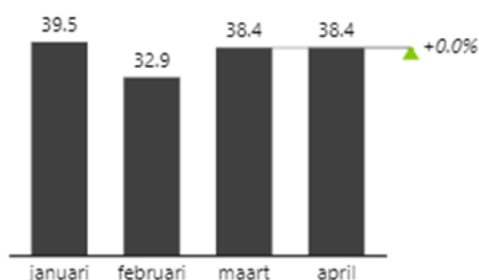
Avg price per ticket by month



Total tickets by month



Price per train ride by month



by ticket type

	Total Price	% Total	Avg Price
Advance	309,274	41.7%	17.6
Off-Peak	223,338	30.1%	25.5
Anytime	209,309	28.2%	39.2
<b>Total</b>	<b>741,921</b>	<b>100.0%</b>	<b>23.4</b>

by ticket class

	Total Price ↓	% Total	Avg Price
Standard	592,522	79.9%	20.7
First Class	149,399	20.1%	48.9
<b>Total</b>	<b>741,921</b>	<b>100.0%</b>	<b>23.4</b>

by Train route

	Total Price	Avg Price
London Kings Cross - York	183,193	46.7
Liverpool Lime Street - London ...	113,299	103.3
London Paddington - Reading	65,368	16.9
London Euston - Manchester Pi...	61,004	85.7
London St Pancras - Birmingha...	52,869	15.2
London Euston - Birmingham ...	50,349	12.0
Manchester Piccadilly - London...	33,860	98.1
Birmingham New Street - Lond...	19,011	27.1
Manchester Piccadilly - Liverpo...	17,310	3.7
Manchester Piccadilly - London...	16,432	114.1
London Paddington - Oxford	12,859	26.5
Liverpool Lime Street - Manche...	11,950	4.0
York - Peterborough	10,764	44.5
<b>Total</b>	<b>741,921</b>	<b>23.4</b>

by purchase type

	Total Price ↓	% Total	Avg Price
Online	382,754	51.6%	20.7
Station	359,167	48.4%	27.4
<b>Total</b>	<b>741,921</b>	<b>100.0%</b>	<b>23.4</b>

by payment method

	Total Price ↓	% Total	Avg Price
Credit Card	469,511	63.3%	24.5
Contactless	219,444	29.6%	20.3
Debit Card	52,966	7.1%	31.5
<b>Total</b>	<b>741,921</b>	<b>100.0%</b>	<b>23.4</b>

# ON TIME PERFORMANCE

NATIONAL RAIL COMPANY | Performance by reason in % of total trains

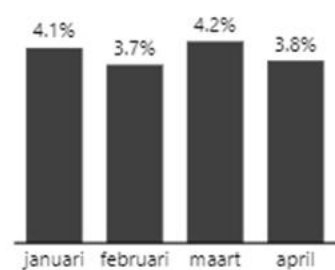
MOST POPULAR ROUTES

TRAVEL PEAK TIMES

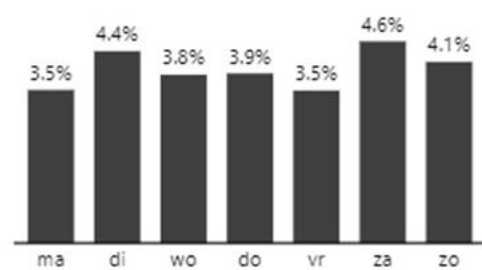
REVENUE

ON TIME PERFORMANCE

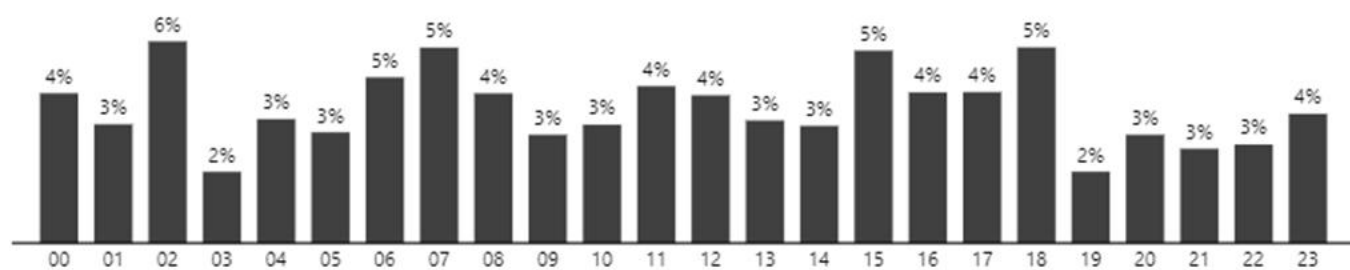
by month



by day of week



by hour



by Departure Station & arrival station

Station	OnTime	Δ Average	Total Trains ↓	% Cancelled	% Delayed
Manchester Piccadilly	84.8%	-5.9pp	3,521	3.6%	11.6%
London Euston	93.5%	+2.8pp	3,059	4.0%	2.5%
Liverpool Lime Street	87.1%	-3.6pp	2,997	3.5%	9.4%
London Paddington	93.2%	+2.5pp	2,643	5.2%	1.6%
London Kings Cross	94.8%	+4.1pp	2,625	3.6%	1.6%
London St Pancras	95.8%	+5.2pp	2,332	4.2%	4.2%
Birmingham New Street	87.9%	-2.7pp	1,394	4.2%	7.8%
York	89.6%	-1.1pp	654	3.7%	6.7%
Reading	95.6%	+5.0pp	459	4.4%	4.4%
Oxford	84.5%	-6.2pp	129	3.9%	11.6%
Edinburgh Waverley			43		100.0%
Bristol Temple Meads	100.0%	+9.3pp	15		
<b>Total</b>	<b>90.7%</b>		<b>19,871</b>	<b>4.0%</b>	<b>5.3%</b>

Reason why a train was not on time

Reason	Cancelled		Delayed	
	#	% Total	#	% Total
Signal Failure	207	11.2%	217	11.7%
Technical Issue	105	5.7%	268	14.5%
Weather	96	5.2%	186	10.0%
Staffing	98	5.3%	123	6.6%
Staff Shortage	94	5.1%	122	6.6%
Weather Condi...	90	4.9%	94	5.1%
Traffic	100	5.4%	52	2.8%
<b>Total</b>	<b>790</b>	<b>42.7%</b>	<b>1,062</b>	<b>57.3%</b>

Refund by cancelled



Refund by delayed

